

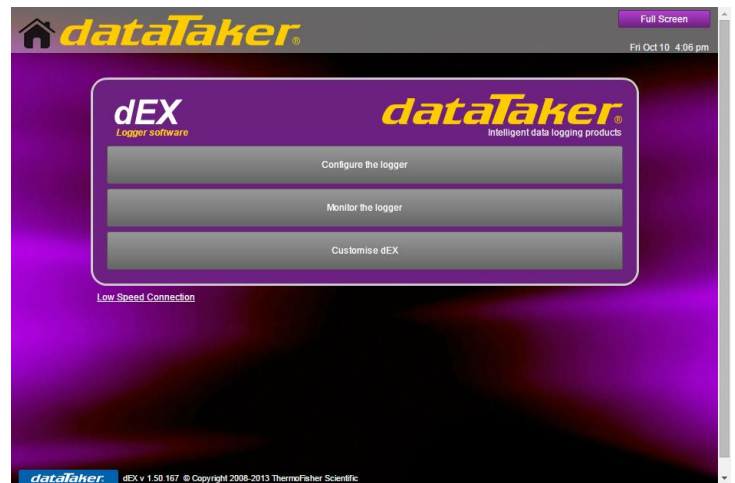
dEX Quick Start

A step by step guide for first time users
of the dataTaker web Interface

1 Connect to dEX

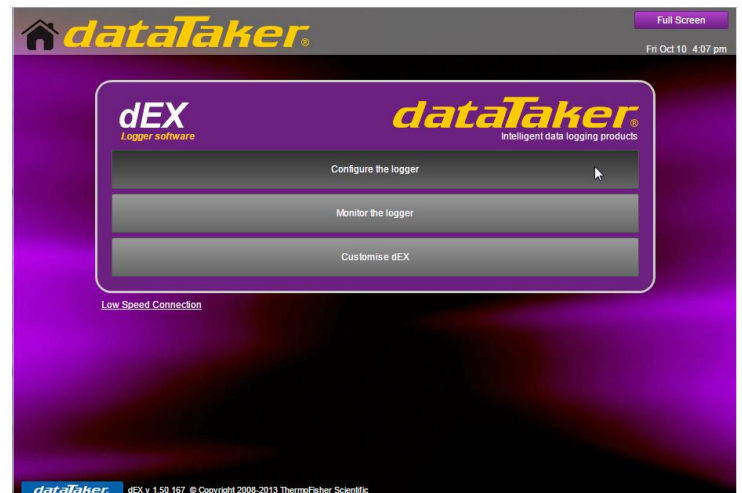
Establish the connection by connecting via DtUSB

Connect the Logger to network and enter the IP
address in the web browser.



2 Configure the Logger

Click on Configure the Logger to start programing the
logger



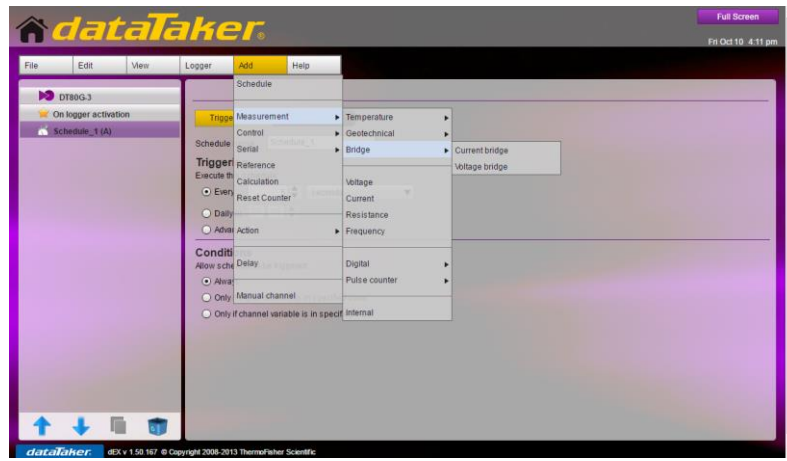
3 When connected first time

When connected for the first time you might see the
following message.



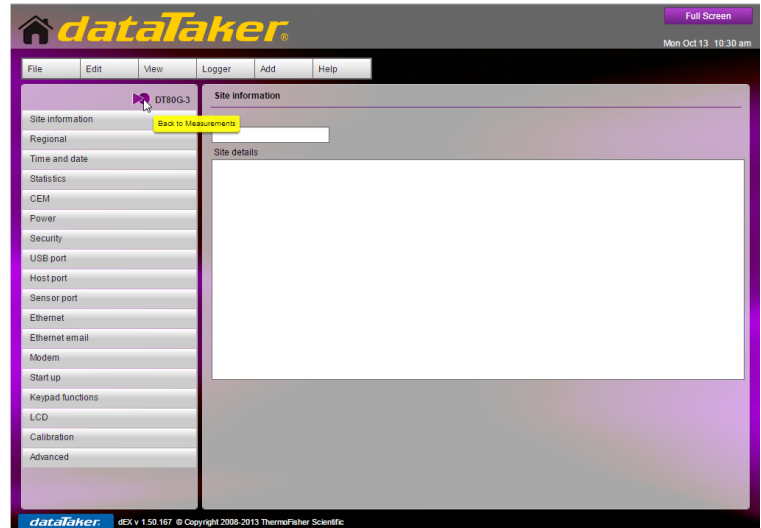
4 Add a Measurement

Add measurement by selecting the schedule and clicking on add and selecting the measurement from the drop down menu



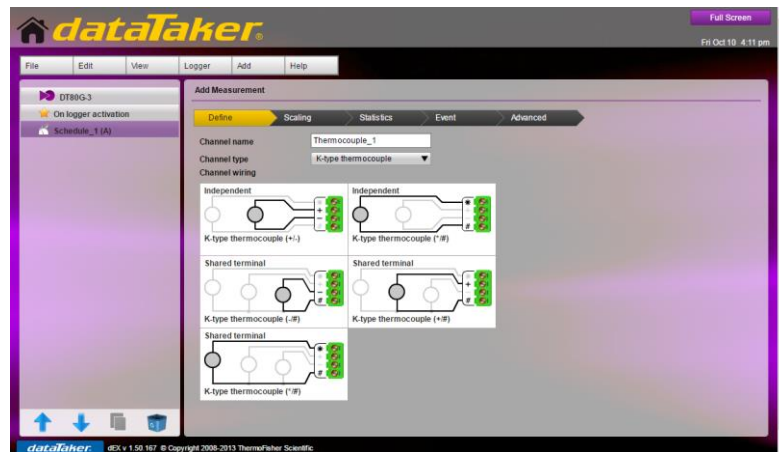
5 Logger settings

Toggle between measurement menu and Logger settings pages by clicking on the Logger Model number



6 Select wiring Option

Once added the measurement select the preferred wiring option and channel number



7 save to Logger

After adding all the measurements send the configuration to the logger



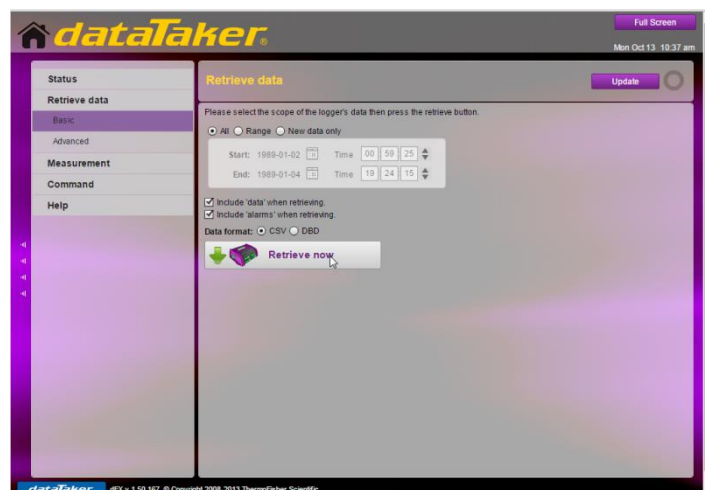
8 View and Retrieve Data

To view and Retrieve the logged data go to monitor the Logger Section



9 Retrieve Data

Retrieve all the data or Range of data from the Monitor the logger section.



10 Add a mimic

View the logged data as mimics by adding mimics in Measurement section



11 Customise dEX

Customise dEX, Add more mimic pages and enable user level authentication in Customise dEX



12 Add Mimic page

Add mimic pages, Show or hide other menu pages from Monitor the logger section via customise dEX

